

MODEL 7100



# WINDSOR DOOR

**TOUGH WORLD. TOUGH DOORS.**



## **ROLLING FIRE DOOR**

Windsor's Model 7100 Rolling Fire Door is built of heavy galvanized steel, is UL Classified, Factory Mutual approved or Warnock Hersey labeled in 3/4, 1-1/2 or 3 hour ratings. The Model 7100 is extremely durable and dependable for years of trouble-free, peace-of-mind operation.

# MODEL 7100

# WINDSOR DOOR

## ROLLING FIRE DOOR

The Model 7100 is designed and built specifically for areas where fire protection is mandatory. The Model 7100 closes automatically when activated by the 160°F fusible link. Heavy-duty interlocking slats withstand extreme temperatures without buckling or failure. If you have any specific application questions OR need technical information about this or any Windsor Door product, please call 1-800-WINDSOR for help.



**FIRE PROTECTIVE**



**SMOKE ACTIVATED (OPTIONAL)**



**HEAT ACTIVATED**



**SECURITY**



**HEAVY-DUTY STRENGTH**



**COLORS (OPTIONAL)**



**EXTREME TEMPERATURES**

### STANDARD FEATURES

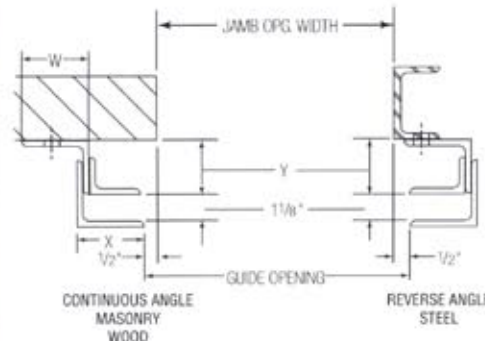
- 22 gauge (minimum) (2-1/4" x 5/8") interconnected strip galvanized steel slats are weathertight and designed to withstand extreme temperatures.
- Automatic closing device utilizes 160°F fusible links on both sides of wall. Governor mechanism controls the doors rate of descent in case of fire.
- Underwriter's Laboratories tested 3/4, 1-1/2 or 3 hour ratings. Factory Mutual Approved, UL Classified or Warnock Hersey labeled.
- Manual push-up or chain hoist operation.
- Bottom bar is reinforced with two (2) steel angles bolted back-to-back. Finish is 1 coat of bronze rust-inhibiting prime paint.
- Counterbalance mechanism features oil-tempered, helical-wound torsion springs.
- Door curtain finish consists of hot dip galvanized coating with bonderized coating for prime coat adhesion. Corrosion inhibiting primer is finished with thermosetting gray polyester top coat.
- Steel guides are constructed of 3 steel angles (4 steel angles for between jamb mount). Finish is 1 coat of bronze rust-inhibiting prime paint.
- Hood is constructed of 24 gauge hot dip galvanized steel, formed to fit the curvature of the brackets and finished with a thermosetting gray polyester top coat.

### OPTIONS

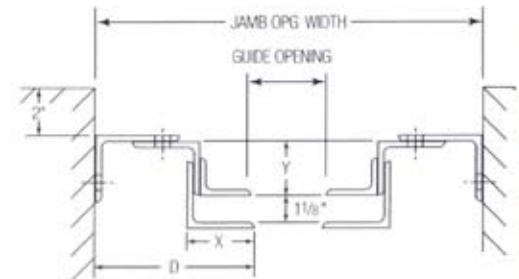
- Hand crank operation
- Motor operators
- Bottom bar safety edge
- Flame-stop baffle (standard on Factory Mutual labeled door).
- Electronically heat or smoke activated.
- 4 hour fire rating (Warnock Hersey door).
- 180 powder coated colors.
- Stainless steel curtain slats.

### MOUNTING DETAILS

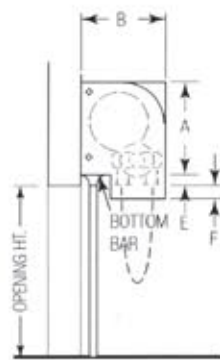
**Face of Wall Guides**



**Between Jamb Guides**



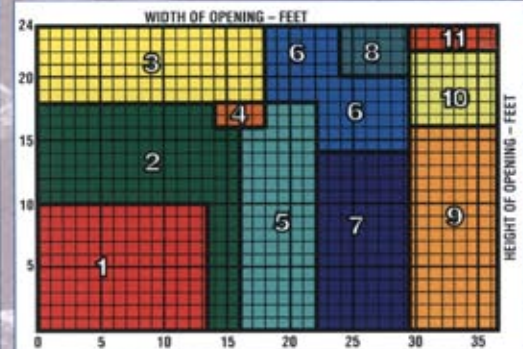
### CHAIN OPERATED SECTION



### SLAT DETAILS



Galvanized steel or stainless steel



AREA	COMPONENT DIMENSIONS							
	A	B	C	D	F	W	X	Y
1	13.0'	14.0'	6.0'	9.0'	9.0'	2.5'	3.0'	2.5'
2	16.0'	17.0'	7.0'	10.0'	9.5'	3.0'	3.5'	3.0'
3	18.0'	19.0'	8.0'	12.0'	16.5'	3.5'	4.0'	3.5'
4	16.0'	17.0'	7.0'	11.0'	17.5'	3.5'	4.0'	3.0'
5	16.0'	17.0'	8.0'	12.0'	17.5'	4.0'	5.0'	3.5'
6	20.0'	21.0'	9.0'	12.5'	17.5'	5.0'	5.0'	3.5'
7	16.0'	17.0'	9.0'	12.5'	18.0'	5.0'	5.0'	4.0'
8	22.0'	23.0'	9.0'	13.5'	18.0'	5.0'	5.0'	4.0'
9	20.0'	21.0'	12.0'	13.5'	17.5'	6.0'	6.0'	4.0'
10	22.0'	23.0'	12.0'	13.5'	17.5'	6.0'	6.0'	4.0'
11	24.0'	25.0'	12.0'	13.5'	17.5'	6.0'	6.0'	4.0'

E = 2-1/2" standard; 3-1/2" with astragal; 5-1/2" with Featheredge



**WINDSOR DOOR**

Printed in the U.S.A. 10/02

201093

100 Murphy Drive ■ Maumelle, AR 72113 ■ 501-562-1872  
 1370 Furneaux Road ■ Marysville, CA 95901 ■ 530-743-1851  
 Website: www.windsor-door.com